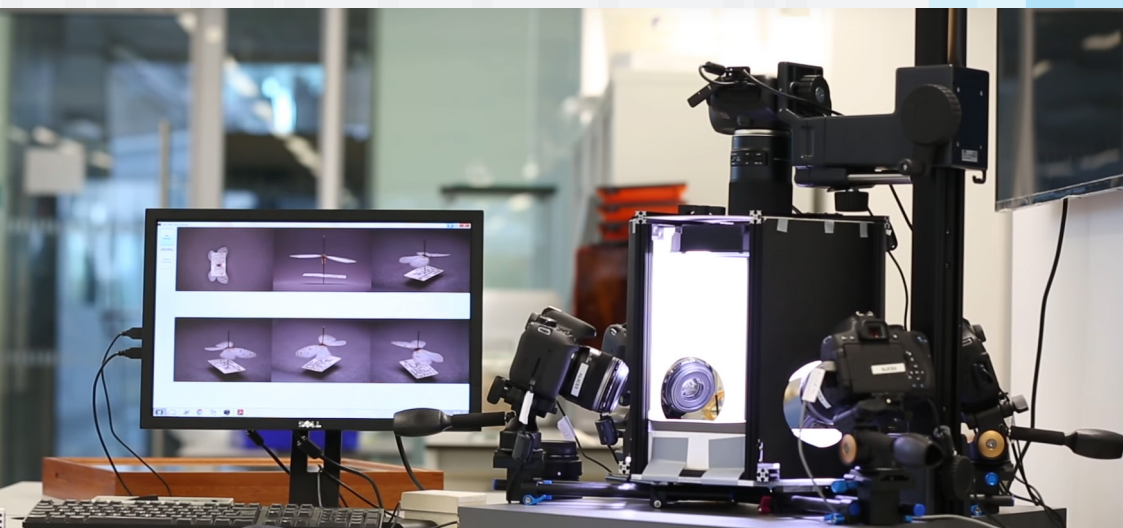
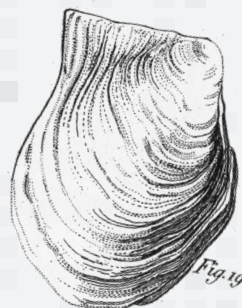


# DiSSCO

Distributed System of Scientific Collections



DiSSCo Community  
E-services



## A door to the digital transformation: DiSSCo Community Services

The Distributed System of Scientific Collections (DiSSCo) aims to create a new business model for a European natural history collection that digitally unifies all European natural science assets under common access, curation, policies and practices.

The new model will provide a unique access point for integrated data analysis and interpretation. For that, DiSSCo will provide a catalogue of services developed by its community of institutions. The services aim to serve real life needs and therefore are based on the priorities set by collection providers in a robust base of users stories.

### What are we trying to achieve?

- ✓ Support and improve both physical and digital access to European natural history collections.
- ✓ Enable and support industrial scale digitisation of natural collections.
- ✓ Provide enhanced interpretation, curation, annotation and use of specimen data by novel, machine-actionable mechanisms.

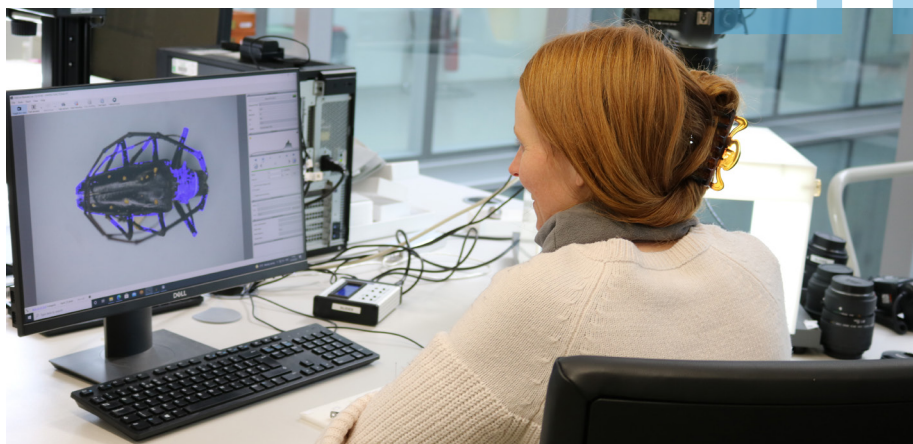


Photo: ©Trustees of the Natural History Museum, London

## Physical and digital access to Natural History Collections

### ELViS: European Loans and Visits System

<https://elvis.dissco.eu/>



#### Description

ELViS is a one-stop access point to collections in Europe. It provides a unified way to request visits, loans and also virtual access. Virtual access requests through ELViS introduce a new type of access: digitisation on demand.

To know more about ELViS latest developments and TRL status, please visit:

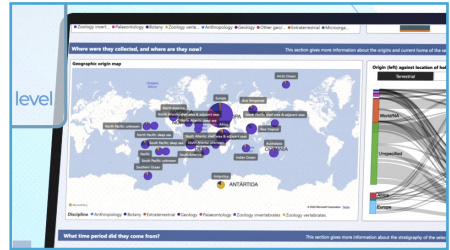
<https://www.dissco.eu/services/#elvis>

## CDD: Visualising and comparing collections across institutions

### Collection Digitisation Dashboard

<https://rebrand.ly/synth-cdd>

(working prototype)



#### Description

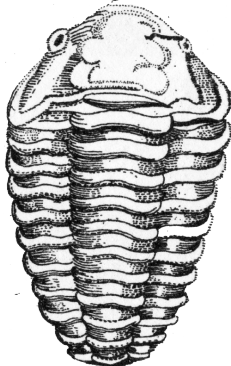
The CDD is an interactive dashboard that visually summarises the content, strengths and digitisation progress of natural history collections across the DiSSCo community.

It also allows users to compare collections on a range of criteria such as number of objects, taxonomic scope, categories of preservation, stratigraphic age, level of digitisation, and others.

To know more about the latest developments and TRL status of the CDD, please visit:

<https://www.dissco.eu/services/#cdd>

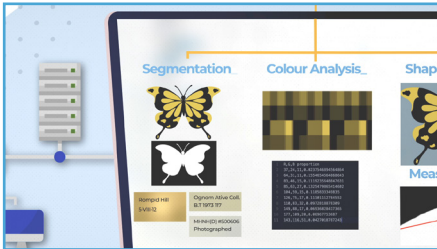
*Fig. 60*



## Community annotation for science

### DiSSCover (Unified Curation and Annotation System)

<https://sandbox.dissco.tech/>



#### Description

DiSSCover (formerly UCAS) will provide event-based curation and annotation functions on the Digital Specimen for experts in the community and for machines. Transactions on the data will be stored as well as provenance information related to the curation or annotation events.

To know more about DiSSCover latest developments and TRL status, please visit:

<https://www.dissco.eu/services/#ucas>



## DiSSCo's commitment to Open Science

### DiSSCo Knowledge Base

<https://know.dissco.eu/>



#### Description

The Knowledge Base provides a centralised interface to find all documentation related to DiSSCo. This includes research outputs generated in the projects linked to DiSSCo (DiSSCo Prepare, ICEDIG, ENVRI-FAIR, MOBILISE, SYNTHESYS + and DiSSCo Transition) as well as training materials, FAQs, best practices, guidelines, technical documentation and documented decisions.

To know more about the Knowledge Base latest developments and TRL status, please visit:

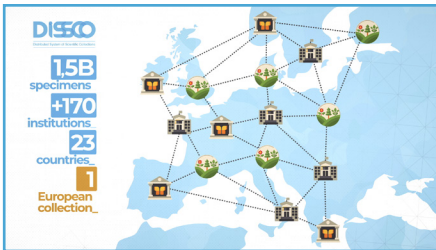
<https://www.dissco.eu/services/#kb>



## Information and support in one place

### DiSSCo Helpdesk

<https://dissco.jitbit.com/helpdesk>



The DiSSCo Helpdesk will be a central place for all questions related to DiSSCo services or access programmes such as the virtual access and transnational access calls in ELViS. As such, it will be integrated with DiSSCo services. The Helpdesk's first line support is done by CETAF secretariat while second line support goes to selected CETAF/DiSSCo institutions. Third line support goes to developers of services. The Helpdesk is using JitBit software.

### Description

The DiSSCo Helpdesk will be a central place for all questions related to DiSSCo services or access programmes, such as the virtual access and transnational access calls in ELViS.

To know more about the Helpdesk latest developments and TRL status, please visit:

<https://www.dissco.eu/services/#hd>

DiSSCo offers different technical knowledge platforms at the scientific community's disposal:

#### DiSSCoTech

Get the latest technical posts about the design of DiSSCo's Infrastructure.

<https://dissco.tech/>

#### DiSSCo Labs

A preview of experimental services and demonstrators by the DiSSCo community.

<https://dissco.tech/labs/>

#### DiSSCo GitHub

Code hosting for DiSSCo software, version control and collaboration.

<https://github.com/DiSSCo>



## A space for test and experimentation

### Digital Specimen Repository

<http://sandbox.dissco.tech/>

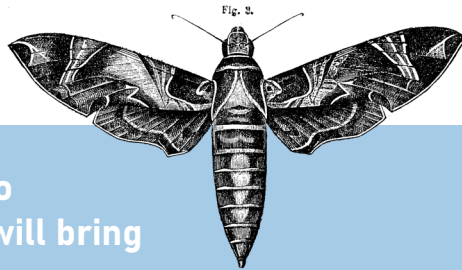


### Description

NSIDR.org is a data repository for experimentation with Digital Specimen and other DiSSCo-related FAIR Digital Objects. It uses Cordra software to manage the digital objects and resolvable identifiers (Handles, DOI).

To know more about NSIDR latest developments and TRL status, please visit:

<https://www.dissco.eu/services/#nsidr>



## What DiSSCo e-services will bring

- For natural history collections providers, they will help them become an integral part of the European and Global scientific community and to adapt to changing user needs and advanced scientific usage. More generally, DiSSCo services will support acknowledgement for the value of natural collections and will reduce digitisation costs, also bringing new opportunities for funding.
- For researchers, the services will improve efficiency to become more responsive to urgent needs, accelerate biodiversity discovery and improve visibility in their contributions to FAIR and high quality data.

For more information about DiSSCo services, please visit:

<https://www.dissco.eu/services>





**1,5 billion specimens, 5,000 scientists,  
170+ institutions, 23 countries...**

**in 1 European digital collection.**

**DISCO**

Distributed System of Scientific Collections

**DiSSCo represents the largest ever formal agreement between natural history museums, botanic gardens and collection-holding universities in the world.**

More than 175+ institutions from 23 countries are part of DiSSCo. Participating countries: Austria, Belgium, Bulgaria, Czech Republic, Denmark, Estonia, Finland, France, Germany, Greece, Hungary, Israel, Italy, Luxembourg, Netherlands, Norway, Poland, Portugal, Slovakia, Spain, Sweden, Switzerland, United Kingdom.



### Contact:

The DiSSCo Coordination and Support Office (CSO) is a distributed team, located in Leiden and Brussels.



Naturalis Biodiversity Center  
Darwinweg 2  
2333 CR Leiden  
The Netherlands



CETAF  
Rue Vautier 29  
1000 Brussels  
Belgium

[www.dissco.eu](http://www.dissco.eu)

[info@dissco.eu](mailto:info@dissco.eu)

[@DiSSCoEU](https://twitter.com/DiSSCoEU)